

Storage Management Software



Maximize Storage Investment

StorView Global Manager is PAC Storage's premier software for maximizing storage utilization and optimizing IT resources and accessibility. An integral member of the StorView Management Suite, Global Manager provides an intuitive graphical interface for centralized monitoring of PAC Storage's systems from anywhere in the world. Designed to provide ease of use management tools and flexible configuration, Global Manager enables businesses to increase their overall return on investment by:

- Improving storage utilization
- Minimizing storage management administration
- Planning for capacity and performance

StorView Global Manager automatically recognizes all PAC Storage systems and servers running StorView on the network even if they are running different operating systems. Global Manager discovers, manages and evaluates storage utilization through capacity management, event monitoring and overall system availability. Dynamic Provisioning offers the ability to expand an array or logical drive without experiencing downtime. The SAN LUN Mapping feature simplifies mapping a LUN to a host, shows hosts and storage physical connections graphically and provides easy reconfiguration as storage environments change. Maintaining a healthy storage environment is made simple through Global Manager's real time alert notification. Based on preset thresholds, alerts are sent to e-mail addresses, pagers, cell phones and SNMP suites for fast response to counter potential business disruptions. The advanced statistical analysis feature gives detailed performance information on logical drives, ports and controllers for maximum storage utilization to optimize return on investment. This feature provides downloadable reporting tools for capacity and performance planning.

The Storage Assistant, Global Manager's automatic configuration tool, allows customers to easily configure their storage for optimal performance and efficiency. Based on the customer's storage allocation requirements, the Storage Assistant automatically configures and allocates the storage to best fit the customer's unique needs. The graphical interface and consolidated toolbar deliver easy navigation and physical views of arrays, LUNs, servers, host connections and their configuration. Global Manager requires minimal storage experience in executing a business's storage strategy. Global Manager is designed to maximize storage utilization, optimize IT resources and improve business continuity.

To learn more about StorView Global Manager software or to see our wide range of storage solutions and services, visit our website at: www.pacstorage.com.

Features & Benefits

- Centralized, flexible management optimizes IT resources and accessibility
- Remote monitoring from anywhere in the world improves availability
- Instant detection of PAC Storage devices provides optimal monitoring
- Automatic storage configuration and allocation maximizes performance
- Platform independent GUI requires minimal storage experience
- Dynamic Provisioning offers online expansion without system downtime
- SAN LUN Mapping simplifies LUN and host connectivity for easy configuration
- Performance statistics provide capacity and performance planning for optimal utilization
- Alerts give immediate status of storage environment changes for quick problem resolution
- Graphical interface and consolidated toolbar deliver easy navigation
- Redundant monitoring feature increases business continuity

Operating System Support

- Microsoft Windows 2000 & 2003
- Red Hat 7.3/9, Advanced Server 2.1, Red Hat Enterprise Linux AS
- SuSE 9 and SuSE Linux Enterprise Server 8

Hardware Requirements

- Personal computer or server with an Intel Pentium III type processor or compatible
- 128MB RAM
- 100MB disk space
- CD-ROM
- Network Interface Card or Loopback adapter
- Video Support 256-colors
(best viewed at 1024 x 768 resolution)

StorView Management Suite Compatibility

- Web browser software that support HTML 1.1 and Javascript 1.3, or better

PAC Storage

- PAC Storage FSATA-16 FC to SATA RAID Systems
- PAC Storage FFIBRE-12 FC to FC RAID Systems
- PAC Storage FSAS-12 FC to SAS/SATA RAID Systems
- PAC Storage SSATA-12 SCSI to SAS/SATA RAID Systems

Customization

- Change the look and feel
- Portable to any operating system
- Easy conversion to any language
- Modular design removes core code from being affected during customizing of look and feel

Warranty

90 days with 8/5 technical support.
Optional services, and advanced warranty contracts are also available.

Ease of Use



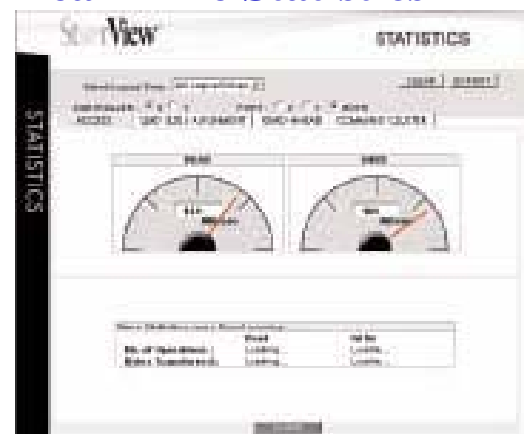
StorView's main screen provides a single view of all PAC Storage devices and enclosure components, as well as configuration and monitoring tools from one window.

Storage Assistant



Automatic configuration of storage array, logical drives and server connections through the Storage Assistant.

Real-Time Statistics



Continuous performance analysis for maximum throughput optimization.